

WEATHERFORD

TEXAS



Sheriff's Posse PRCA Rodeo



Cutting Horse Capital



Places to Stay



Peach Festival

★ Join Us ★

- Parker County Peach Festival..... 2nd Saturday in July
- Sheriff's Posse PRCA Rodeo 2nd Week in June
- Brazos Bash Cutting..... Last Week of September
- Christmas on the Square 1st Saturday in December
- Candlelight Tour of Homes 2nd Saturday in December
- First Monday Trade Days..... Weekend before 1st
Monday Every Month

Places to Stay, Historic Shopping District, Cutting Horse Events

www.weatherford-chamber.com

1-817-594-3801



Festivals and



Peach Festival



Parker County Peach Festival takes place on the historic Weatherford square the second Saturday of July. Dozens of vendors supply Peach ice cream, juleps, crepes, pies, or just sweet, juicy peaches are in abundance. More than 35,000 visitors enjoy shopping for arts, crafts, clothing, musical instruments, and food at more than 200 vendor booths. Live music floats through the air, youthful dancers perform, babies compete in the diaper derby, and cyclists race in the peach Pedal. Coming to the official Peach Capital of Texas is a slice of Americana you won't want to miss.



First Monday Trade Days



First Monday Trade Days originated at the turn-of-the-century in Parker County. Farm and ranch families worked the land all week and came to town on the weekend to buy, sell, and trade goods. The tradition continues today, on the weekend before the first Monday of each month. A wide variety of new, gently used, and antique items can be found spread across five acres at the southwest corner of Santa Fe Drive and Fort Worth Highway.

www.weatherfordparks.com

Special Events



Christmas on the Square rings in the holiday season on the first Saturday of each December. It's a time to begin shopping while enjoying seasonal music, food, and delightfully festive atmosphere. Many shopkeepers offer special bargains to help you complete your gift list.



Candlelight Tour of Homes



Your holiday activities should also include the **Candlelight Tour of Homes**, on the second Saturday of every December. This lovely evening showcases a wide array of elegant historical residences. Dressed up in vintage holiday finery, these homes offer the best of the holidays as we want to remember them.
www.parkercountyheritagesociety.com



Holiday in the Park is held at Heritage Park and features fun activities such as snow play areas, petting zoo, characters, holiday music, and food trucks.
weatherfordtx.gov/holidayinthepark



Holiday in the Park

Festivals and



Weatherford Blooms



Weatherford Blooms is the newest festival in downtown. This blooming event focuses on Home & Gardens. Held typically in late March or early April, spring is in the air. The Weatherford Main Street hosts this fun event.



Capernaum: First Century Village



Capernaum: First Century Village:

The Majestic Statue Garden is a 30,000 sq.ft. garden that features biblical statues throughout.

Live, one-of-a-kind outdoor walk through drama productions are presented during the year:

The Passover Experience takes place in the village learning the traditions of the biblical feast. You will feel the sentiment of Christ as you witness Judas Iscariot and his plot to betray Jesus. You'll view the reenactment of the actual Last Supper.

Journey Through the Apocalypse as you face your future walking through a terrifying maze of events.

The Star of Bethlehem Experience allows you to experience HIStory the night Jesus was born. You'll encounter the crowded inn and the stable where Joseph, Mary and baby Jesus are staying.

www.capernaumvillage.com

Special Events



Shaw-Kemp Open House



The Shaw-Kemp Open House happens only once a year in April. The Kemp family and a host of special volunteers wait to show visitors a little bit of history. A Texas historical marker, granted in 1982, shows the history of the Shaw-Kemp log cabin built in 1856 and restored in 1980. Other Shaw-Kemp ranch buildings include: Mt. Nebo School, church, grocery store, post office, barber shop and bath house, DeBeauford-Kemp house, sheriff's office, Combs log cabin and Kemp's Nebo Valley bank. A host of events will take place throughout the afternoon. Bluebonnets galore! FREE!



Talking Tombstone Tour



The Talking Tombstone Tour is held one Saturday in October each year. This event is hosted in the old Greenwood Cemetery and brings the past to life with a different theme each year.

www.parkercountyheritagesociety.com

Horsin' Around



Sheriff's Posse PRCA Rodeo



The Sheriff's Posse PRCA Rodeo and Livestock Show, held the second week each June, salutes the western heritage of Parker County with a wide variety of events from bronc riding to team roping, top cowboys and cowgirls are front and center. An old-fashioned country-western street dance kicks off the competition, with musical entertainment taking place almost every night after the last horseman rides out of the arena.
www.parkercountysheriffsposse.com



Parker County



Greenwood Farms



Greenwood Farm Inc. is a boarding stable and eventing facility located in Weatherford. Two USEA recognized shows are held there each year, along with monthly clinics and schooling sessions. The facility is available for boarding, private clinics and shows. It includes a combined training facility with cross country courses beginner novice through intermediate. Greenwood Farm, owned and operated by Christie Tull, regularly hosts equine “triathlons” of precision dressage, stadium jumping and cross-country jumping- the “heart and soul” of the horse trials, known as eventing.
www.greenwoodfarmonline.com



Photo courtesy NCHA

Cutting Horse Capital of the World



“The Cutting Horse Capital of the World” is an international distinction for the city of Weatherford. With more cutting horses per capita than any other city, you can catch a weekend event almost anytime. Plus the world’s richest cutting competitions are held three times a year in Fort Worth, just a twenty-minute drive away.

The Brazos Bash, among the top ten cutting events in the nation, is held in Weatherford during the last week of September.

Things To See



Famous Gravesites

Famous Gravesites:

Oliver Loving, Bose Ikard, and Mary Martin are just a few of the well-known folks who claim a final resting place at one of the numerous historical cemeteries in Parker County. A map of these sites, along with a great number of historical markers is available at the Weatherford Chamber of Commerce office.



Splash Kingdom

Splash Kingdom Waterpark is located at I-20 in Hudson Oaks. The park is the third of the five locations owned by the Blevins family. Splash Kingdom is fun for the whole family offering an array of attractions for all ages. This includes a wave pool, activity pool, 700 ft. lazy river, five body slides, kids activity area with four kiddie slides, a splash pool & a host of delicious concession stand goodies. They are dedicated to not only creating a great guest experience at their parks but to providing leadership and fellowship opportunities to their student employees as well.
www.splashkingdomwaterpark.com



... and Do



Theatre Off The Square



Theatre Off The Square is a 501c non-profit corporation managed by a Board of Directors who donate their time, effort & resources to benefit the theatre and the community. Theatre Off The Square is Parker County's ONLY regularly scheduled live theatre venue. Productions require a team effort, which includes casts and crews, theatre Guild members and Board of Directors.
www.theatreoffthesquare.org



Texas Opry



Texas Opry is home to great entertainment on a regular basis. There is not a bad seat in the house. The entire Auditorium is all one level, no steps, wide aisles with extra space between the seat rows. Restrooms are Handicap accessible. A full concession stand is in operation. Ample parking is available. Meeting rooms and Auditorium are available for rent.
www.texasoprytheater.com

Downtown



Fire Oak Grill
114 Austin Ave.
817-594-0400
fireoakgrill.com

Fire Oak Grill is a casual yet upscale atmosphere that makes the perfect setting. Whether you want an intimate dinner for two or a large group gathering, Fire Oak has what you are looking for.

**Vintage Grill
& Car Museum**
202 Fort Worth Hwy.
817-594-3750



Vintage Grill & Car Museum features farm to table southern style cuisine with a twist, plus a collection of vintage automobiles. Open daily, located in the restored original McDavid dealership building, circa 1930. Next door, the Vintage Car Museum & Event Center has 12,000 sq.ft. for vintage cars & special events. Located in the restored W.R. Turners stable building, circa 1886. A place to rest, eat, celebrate, explore & enjoy!



**Short Chef Coffee
House & Bistro**
120 College Ave.



Justice Burger
105 College Ave.
817-757-7977
weatherfordjusticeburger.com

Weatherford



Downtown Cafe

101 W. Church

817-594-8717

Twisted Snifter

111 N. Main

817-550-6110



Yesterdays Sandwich

201 N. Main

817-599-3903

yesterdayssandwichshop.com

Sweet Springs Winery

215 N. Main

817-594-3333

sweetspringswinery.com



Sweet Springs Winery is a vertically integrated boutique vineyard & winery located in Weatherford. As a small, family-owned business, the goal is to

provide customers with delicious, award winning, quality wines that are hand-crafted from Texas grapes and offer guests an inviting, fun atmosphere to relax and reflect while enjoying wine. Sweet Springs Winery offers both a Vinedo Room and an outdoor patio to host events.

Places to Stay

Weatherford has many options for your get-a-way. You can choose from our Bed and Breakfasts, Dude Ranches, Cabins, or one of our many hotels. There are perfect accommodations for everyone, you just decide what best fits your needs and wants. Visit the Chamber website at www.weatherford-chamber.com for a complete listing of lodging accommodations.



Mamas Wish Bed & Breakfast

is a large 1893 Colonial Revival that has been completed renovated. It is the birthplace of Mary Martin and is located in the historic district just six blocks from historic downtown Weatherford

shopping. There is a large inviting wraparound porch for dining or a dip into the swimming pool with waterfall. All guest accommodations are on the 2nd floor. All guests enjoy a 3 course breakfast, complimentary bottled water, soft drinks or coffee upstairs, comfy seating, lighting and ceiling fans in all rooms. Cable TV and DVD player in the sunroom.



Mamas Wish



Angels Nest is a one of a kind bed & breakfast located one mile from downtown Weatherford. Situated on park like acres the 114 year old historic landmark has four fireplaces, ten unique bedrooms which have king size beds, private baths, flat panel tv & breakfast table set up ready for a full hot

breakfast to be delivered to your room each morning. Seven rooms have oversized Jacuzzi tubs designed for two to relax comfortably. Two rooms have fireplaces. Six rooms have balconies with chairs to enjoy romantic evenings. There are special packages available. www.angels-nest.com



Angels Nest



Rose Garden Cottage

is located close to downtown Weatherford at 212 E. Lee. It is a 1900's private upscale 1600 square foot house with 3 bedrooms & 2 full baths (one with a whirlpool tub) that can sleep 5 people. You will feel right at home. It's furnished with gorgeous antiques, comfortable beds & luxurious linens. The kitchen is completely equipped & has a washer & dryer. You get the whole house as part of your package deal.

www.rosegardencottage.com



Rose Garden Cottage

History



James and Dorothy Doss Heritage and Culture Center



The mission of **The Doss Heritage and Culture Center** is to collect, preserve & interpret the history of Parker County through cultural & educational events that raise community awareness & pride in our western heritage. Visitors are taken back to the early 1800's, when Charles Goodnight drove cattle through Parker County on the legendary trail named in his honor. In addition to rugged pioneers, Weatherford has been home to celebrity artists and actors. The Heritage & Culture Center brings Parker County history to life through exhibits of clothings, tools, furnishings, art and writings. Educational programs and exhibits focus on a wide range of history.
www.dosscenter.org



Museum of the Americas



Museum of the Americas presents the colorful & diverse heritage of native peoples of the Americas through a representative collection of late 19th & 20th century artifacts, crafts & folk art. The goal is to nurture understanding of and appreciate diverse peoples, their history, the beauty they create & their struggles to survive and preserve their culture.
www.museumoftheamericas.com

History



Parker County Courthouse



Vintage Buildings

The streets of Weatherford are lined with wonderful examples of historical buildings and gracious homes, many restored to their original grandeur. The Parker County Courthouse, with its long and illustrious past dating from 1886, is just one of the many highpoints. Complete driving and walking tour brochures are available at the Chamber of Commerce office.



Vintage Car Museum and Event Center



Brownstone Wedding Chapel

- In this 1894 stone structure, Brownstone Wedding Chapel has elaborate stained glass windows, wooden pews to seat 125 people with elaborate floral pew markers and a dramatic staircase. Windows, set deeply in stone walls, are decorated with wrought-iron candelabra. The altar is in front of a massively large stained glass window. Upstairs is the women's dressing area with the men located on the ground floor. An on-site reception hall is also available. The place to make your wedding affordable!



Brownstone Wedding Chapel

www.brownstonechapel.com

History



Historic Homes:

Perhaps Weatherford's greatest treasure is the abundance of historic homes & buildings. More than 60 Queen Anne, Victorian & other architecturally significant homes built at the turn of the century sit along the tree-lined avenues where horse-drawn carriages once carried the pillars of the community.



Places to Go



Chandor Gardens



Chandor Gardens is a special place that blends the classic elegance of the traditional English gardens with the dramatic design and bold features of the Chinese gardens. Created from a limestone hilltop, this unique estate garden is the brilliant vision of famed portrait artist Douglas Chandor (1897-1953). His passion for art and beauty are expressed in the Garden's ingenious layout, rich with water features, intricate stonework, timeless sculpture, and delightful surprises around every corner.

Chandor Gardens is a splendid setting for weddings, retreats, special events, private parties and tours. The 3.5 acre garden and 5600 square foot mansion may be rented together or separately and accommodate groups of up to 200 guests. Chandor Gardens is on the National Register of Historic Places.

www.chandorgardens.com



Lake Weatherford



Lake Weatherford is east of Weatherford off US 80/180, with a surface area of 1158 acres. The lake has a maximum depth of 39 feet and fluctuates 2-8 feet annually. Almost no vegetation exists in the deeper lower lake. Cattails and lily pads grow in the shallow upper lake. Predominant fish species are largemouth bass, white bass, crappie, channel catfish and sunfish. There is a marina at the lake that handles the activity for the lake.

Things to Do



Amphitheater

Heritage Park offers the community a safe environment for events that are within close proximity to downtown & centrally located to the community. Heritage Park spans 62 acres & is home to the Event Center, Patsy Hooks Dog Park & Food Park and hosts First Monday Trade Days on a monthly basis. The amphitheater will attract more tourism and position Weatherford as an entertainment hub outside the DFW area. It will seat 1500-2000 with additional space for handicap accessibility. In addition, the amphitheater will have state-of-the-art audio technology & opportunities for stage lighting during larger events. Summer concert series will bring local, regional &



Patsy Hooks Dog Park

notable artists to the Heritage Park amphitheater. Local theater groups will be featured for both small & large productions.



Food Truck Park

Town Creek Hike & Bike Trail: As the Town Creek Hike & Bike Trail meanders through the heart of Weatherford, travelers will enjoy the natural woodland setting along the creek. One highlight of the pathway is it's stop in Holland Lake Park. The park includes a playground, picnic facilities, bike racks, athletic fields, restrooms, a pond with fishing and parking areas. Other trailheads are located at the Weatherford Police Station, Bose Ikard Elementary school and the Chamber of Commerce. The trail is 3.3 miles of concrete, open to hikers and bikers with no motorized vehicles allowed.

Statues



Now known as the Cutting Horse Capital of the World, Weatherford is home to hundreds of professional trainers, Hall-of-Fame horses and a breathtaking, life-size bronze cutting horse. The bronze statue which stands in front of the Chamber office was sculpted by Kelly Graham. It is appr. 2000 lbs. and is the largest & heaviest bronze done by Graham. It was unveiled in 1999.



Medical Center @925 Santa Fe



Brilliant Medical @925 Santa Fe



The Peter Pan statue is located in front of the Weatherford Public Library at 1214 Charles Street. The statue is a bronze likeness of actress Mary Martin's the ever-youthful character of Peter Pan, a role she made famous on Broadway & 2 TV presentations. Sculpted by Ronald Thomason & cast by Metz Castleberry, the statue was dedicated July 4, 1976. A plaque at the base reads, "A tribute to the genius of Weatherford's Mary Martin who brought a myth to life for America's millions." In 1963, a previous statue of Mary Martin's Peter Pan was dedicated at Cherry Park.



Around Town



The memory of Weatherford's favorite son, Larry Hagman, was immortalized on Sept. 21, 2014, when a statue of the late actor was unveiled at the Doss Heritage & Culture Center. Larry became a true TV star in 1965 in the comedy series, "I Dream of Jeannie," in which he played an amiable astronaut whose life is played by a beautiful blonde genie. It wasn't until 1977, when "Dallas" came along, however, that Larry's career took off again. Larry Hagman became J.R. Ewing, the despicable, corrupt, merciless millionaire, the man everyone loved to hate.



Sunny Street @ 1314 S. Main



The Dermatology Spot @ 1841 Martin Dr.



Southside Bank @ 318 S. Main



The Dermatology Spot @ 1841 Martin Dr.



McDonald's @ 2407 S. Main



LaQuinta @ 1915 Wall Street

Shopping

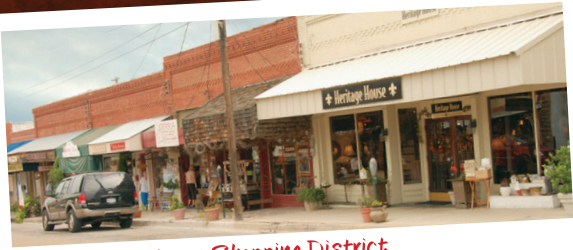
When it comes to shopping, Weatherford has many options! Historic downtown is a wonderful district to shop to your heart's content. There is no longer a reason to travel to the metroplex. From antiques to boutiques from specialty shops to department stores, Weatherford is the place to fill your shopping needs.



The Farmers Market



The Farmers Market takes place seven days a week in a specially reserved space near the square. Fresh fruit and flavor-packed vegetables are brought straight from the farm to your dinner table. On any given day, you will find fresh peaches, blueberries, strawberries, squash, zucchini, broccoli, cabbage, and more. It's also a great place to add pink, purple, or white pansies and a huge variety of other plants to your garden or home.



Historic Downtown Shopping District



The Historic Downtown Shopping District offers unusual and one-of-a-kind items including antiques, crafts, gifts, home accessories, lighting, and art. All around the downtown Weatherford square this collection of shops and restaurants tempts shoppers to slow down and soak up the ambiance of a break from the fast paced shopping malls.

Weatherford
CHAMBER OF COMMERCE
401 Fort Worth Highway • Weatherford, Texas